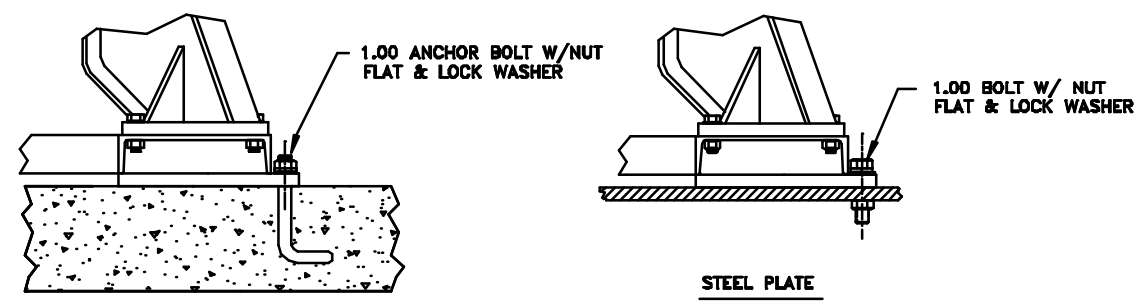
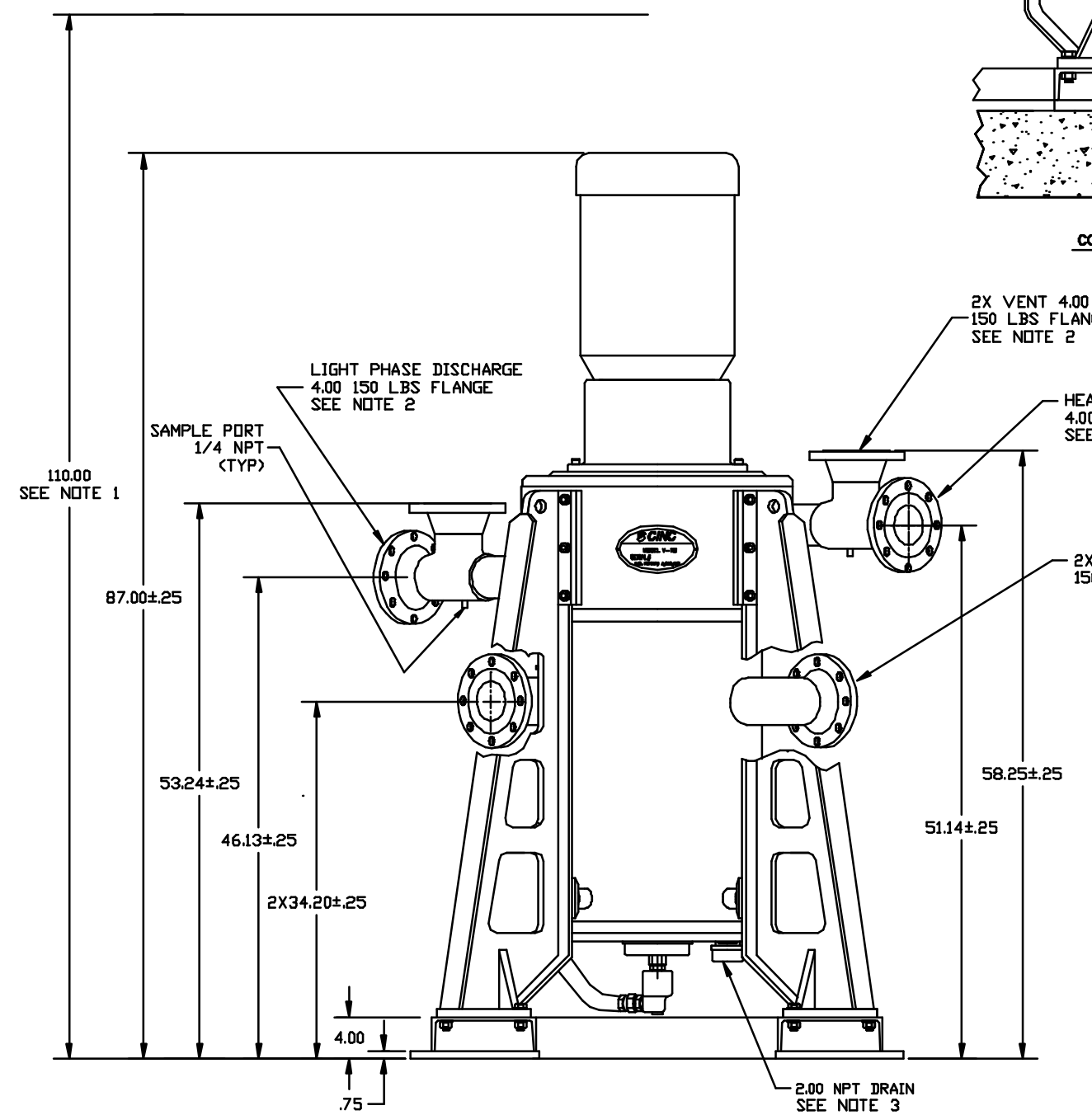


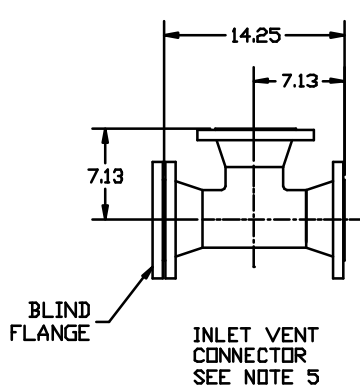
REVISIONS				
REV	ZONE	DESCRIPTION	DATE	APPROVED



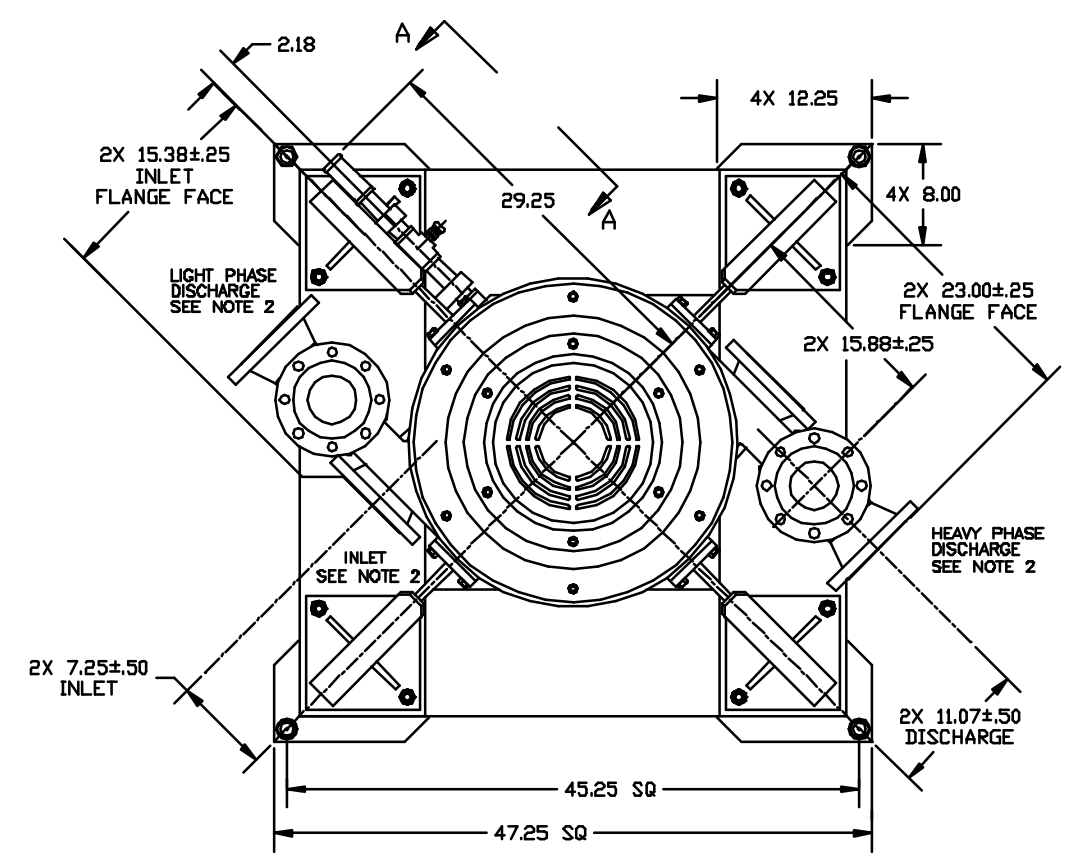
TYPICAL BASE MOUNTING*
 * INSTALLATION AND MOUNTING SHALL MEET ALL LOCAL AND STATE CODES.



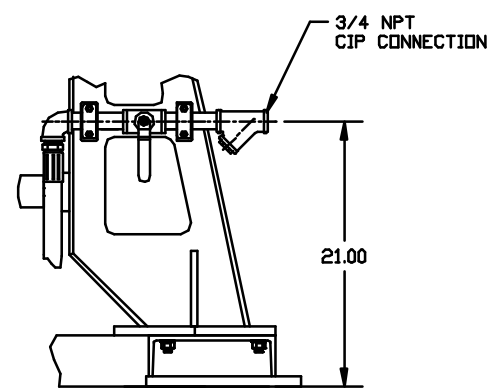
ELEVATION



INLET VENT CONNECTOR
SEE NOTE 5



TOP VIEW BASE



VIEW A-A

- NOTE;
1. MINIMUM HEIGHT REQUIRED TO DISASSEMBLE SEPARATOR, CRANE, HOOK AND LIFTING APPARATUS MUST BE ADDED.
 2. FLEX CONNECTORS MUST BE INSTALLED AT BOTH INLETS AND OUTLETS OF CENTRIFUGE, SEE DRAWING 0040100 AND INSTRUCTION MANUAL.
 3. UNLESS OTHERWISE SPECIFIED, DRAIN LOCATION WILL BE AS SHOWN, EXITING ON THE RIGHT SIDE.
 4. TOTAL ESTIMATED WEIGHT 3,480 LBS.
 5. WHEN BOTH INLETS ARE REQUIRED FOR PRODUCT FEED INSTALL THE VENT CONNECTOR ON ONE INLET WITH VENT CONNECTION IN VERTICAL UP POSITION. WHEN ONE INLET ONLY IS REQUIRED FOR PRODUCT FEED INSTALL THE VENT VENT CONNECTOR WITH BLIND FLANGE ON OTHER INLET IN VERTICAL UP POSITION.

ITEM	QTY REQD	PART OR IDENTIFYING NO.	NOMENCLATURE OR DESCRIPTION	MATERIAL / SPECIFICATION
UNLESS OTHERWISE SPECIFIED DIMENSIONS ARE IN INCHES				
TOLERANCES				
DECIMALS		ANGLES		
.XX	±.03		±1°	
.XXX	±.010			
BROKEN EDGES .010 MAX				
FILLETS R.015 MAX				
125 MACHINE SURFACES				
INTERPRET PER ANSI Y14.5M (1982)				
DO NOT SCALE DRAWING				
CONTRACT NO.		PARTS LIST		
DRAWN L. MACALUSO		DATE 23SEP96		
DESIGN		QUALITY		
MANUFACTURING		CHECKED BY		
SCALE NONE		RELEASE DATE		SHEET 1 OF

CINC CARSON CITY, NV 89708

CENTRIFUGAL SEPARATOR GENERAL LAYOUT V-16 FLANGED CONNECTION

SIZE **D** DRAWING NO. **1610601** REVISION **A**